

# FY24 Fact Sheet



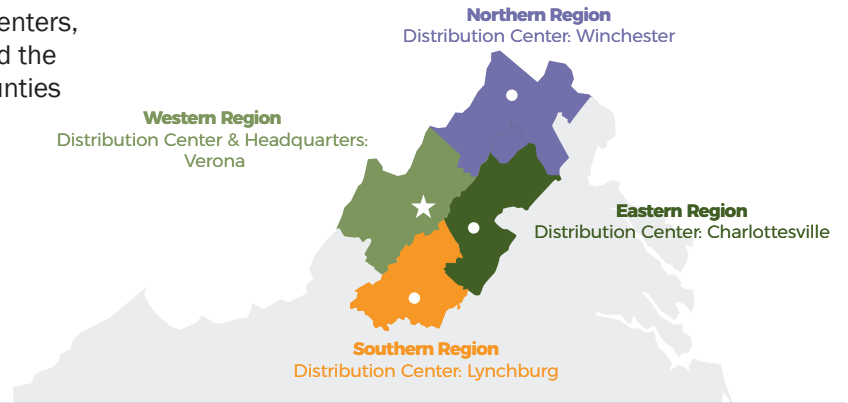
**Blue Ridge Area  
FOOD BANK**  
Everyone should have enough to eat.



We serve your community through four distribution centers, located in Charlottesville, Lynchburg, Winchester, and the Verona headquarters. Our service area spans 25 counties and 8 cities.

Our **MISSION** is to improve food security through equitable access to good nutrition and the resources that support health and well-being.

Our **VISION** is nourishing food and good health—for everyone, every day.



## The Need

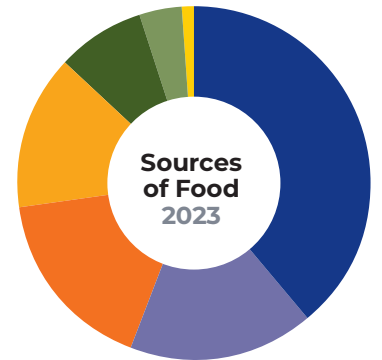
Hunger affects people in every zip code in the Blue Ridge area.



**1 of every 12 children**



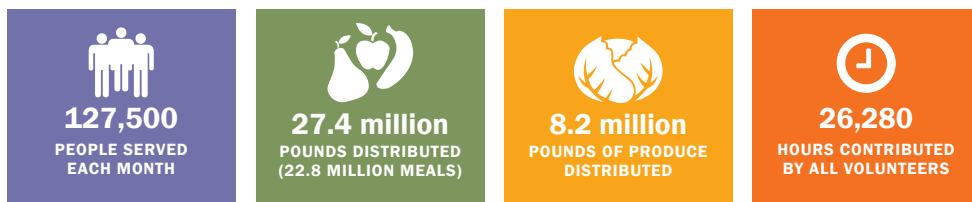
**1 of every 12 neighbors**



- Retail Grocer Donations **39%**
- USDA Contributions **17%**
- Purchased Food **17%**
- Donations from Farmers and Produce Traders **14%**
- Manufacturer Donations **8%**
- Miscellaneous **4%**
- Food Drives **1%**

**NOTE:** Miscellaneous includes transfers and trades with other food banks, prepared foods, and other misc.

## Your Impact in FY23



## How We Work, Together



# FY24 Fact Sheet Eastern Region



Blue Ridge Area  
**FOOD BANK**  
Everyone should have enough to eat.

PARTNER  
FOOD BANK OF  
**FEEDING  
AMERICA**

In the **Eastern Region**, we provide food to our neighbors in the city of Charlottesville, and the counties of Albemarle, Buckingham, Culpeper, Fluvanna, Greene, Madison, and Orange.



## Eastern Region



**5.4 million**  
POUNDS DISTRIBUTED  
(4.5 MILLION MEALS)



**84**  
PARTNERS  
(FOOD PANTRIES AND  
PROGRAM SITES)



**5,000**  
AVERAGE NUMBER  
OF CHILDREN  
SERVED EACH MONTH\*



**4,700**  
AVERAGE NUMBER  
OF SENIORS  
SERVED EACH MONTH\*

\*Through pantries and programs

## The Need



**22,200** people served  
each month in  
this area

## Our Strategic Priorities and Programs

### Eliminate Disparities in Access to Nutritious Food

- Partner Food Pantries, Soup Kitchens, and Shelters
- Mobile Food Pantry
- Neighborhood Produce Market
- Pop-Up Mobile Distributions
- Emergency Food Boxes
- Kids Café
- Summer Kid Packs

- Family Backpack Program & Community-Supported Backpack Programs
- Summer Food Service
- Good Food School Market
- Reach
- Senior Food Boxes (CSFP)
- Culturally Familiar Food

### Improve Health of Guests

- Food Pharmacy
- Healthy Pantry Initiative
- Super Pantry
- Walk the Line

### Support Household Financial Stability

- Public Benefits Outreach