

FY24 Fact Sheet



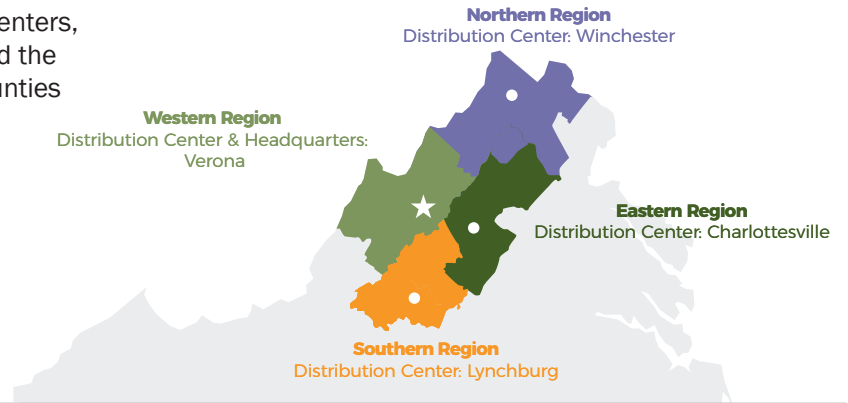
**Blue Ridge Area
FOOD BANK**
Everyone should have enough to eat.



We serve your community through four distribution centers, located in Charlottesville, Lynchburg, Winchester, and the Verona headquarters. Our service area spans 25 counties and 8 cities.

Our **MISSION** is to improve food security through equitable access to good nutrition and the resources that support health and well-being.

Our **VISION** is nourishing food and good health—for everyone, every day.



The Need

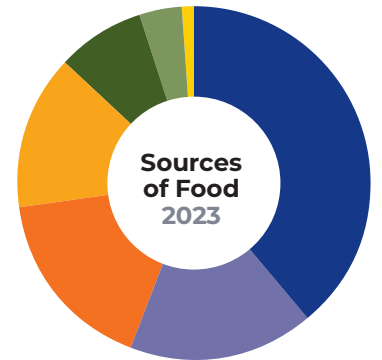
Hunger affects people in every zip code in the Blue Ridge area.



1 of every 12 children



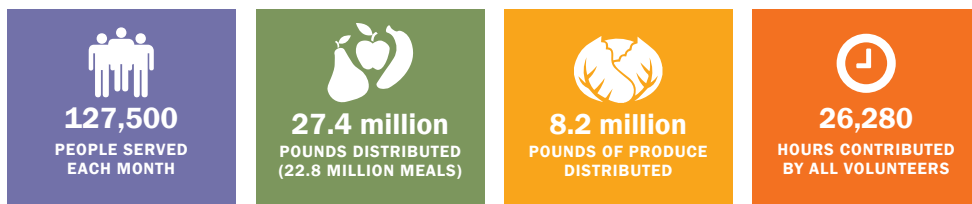
1 of every 12 neighbors



- Retail Grocer Donations **39%**
- USDA Contributions **17%**
- Purchased Food **17%**
- Donations from Farmers and Produce Traders **14%**
- Manufacturer Donations **8%**
- Miscellaneous **4%**
- Food Drives **1%**

NOTE: Miscellaneous includes transfers and trades with other food banks, prepared foods, and other misc.

Your Impact in FY23



How We Work, Together



FY24 Fact Sheet Northern Region



In the **Northern Region**, we provide food to our neighbors in the city of Winchester, and the counties of Clarke, Fauquier, Frederick, Loudoun, Page, Rappahannock, Shenandoah, and Warren.



Northern Region

 <p>8.5 million POUNDS DISTRIBUTED (7.1 MILLION MEALS)</p>	 <p>101 PARTNERS (FOOD PANTRIES AND PROGRAM SITES)</p>
 <p>16,300 AVERAGE NUMBER OF CHILDREN SERVED EACH MONTH*</p>	 <p>6,600 AVERAGE NUMBER OF SENIORS SERVED EACH MONTH*</p>

*Through pantries and programs

The Need



43,300 people served each month in this area

Our Strategic Priorities and Programs

Eliminate Disparities in Access to Nutritious Food

- | | |
|---|--|
| <ul style="list-style-type: none"> Partner Food Pantries, Soup Kitchens, and Shelters Mobile Food Pantry Neighborhood Produce Market Pop-Up Mobile Distributions Emergency Food Boxes Kids Café Summer Kid Packs | <ul style="list-style-type: none"> Family BackPack Program & Community-Supported Backpack Programs Summer Food Service Good Food School Market Reach Senior Food Boxes (CSFP) Culturally Familiar Food |
|---|--|

Improve Health of Guests

- Food Pharmacy
- Healthy Pantry Initiative
- Super Pantry
- Walk the Line

Support Household Financial Stability

- Public Benefits Outreach

