

FY24 Fact Sheet



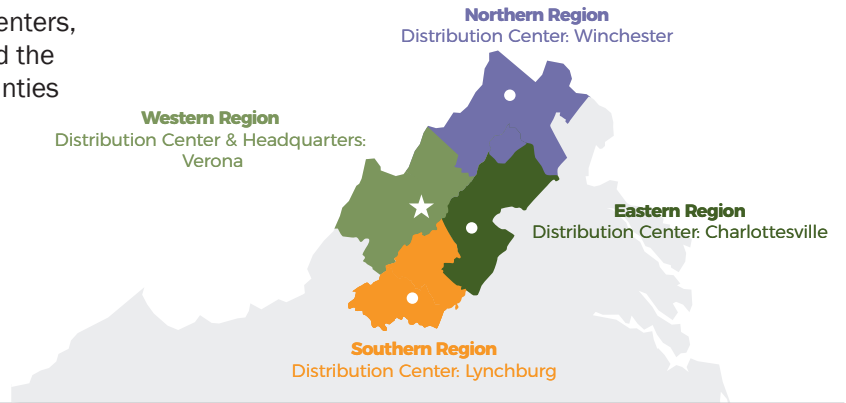
**Blue Ridge Area
FOOD BANK**
Everyone should have enough to eat.



We serve your community through four distribution centers, located in Charlottesville, Lynchburg, Winchester, and the Verona headquarters. Our service area spans 25 counties and 8 cities.

Our **MISSION** is to improve food security through equitable access to good nutrition and the resources that support health and well-being.

Our **VISION** is nourishing food and good health—for everyone, every day.



The Need

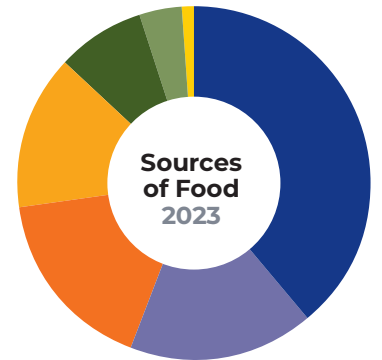
Hunger affects people in every zip code in the Blue Ridge area.



1 of every 12 children



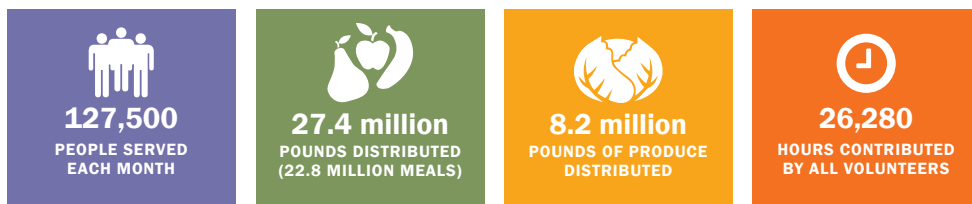
1 of every 12 neighbors



- Retail Grocer Donations **39%**
- USDA Contributions **17%**
- Purchased Food **17%**
- Donations from Farmers and Produce Traders **14%**
- Manufacturer Donations **8%**
- Miscellaneous **4%**
- Food Drives **1%**

NOTE: Miscellaneous includes transfers and trades with other food banks, prepared foods, and other misc.

Your Impact in FY23



How We Work, Together



FY24 Fact Sheet Southern Region



Blue Ridge Area
FOOD BANK
Everyone should have enough to eat.

PARTNER
FOOD BANK OF
**THE FEEDING
AMERICA**

In the **Southern Region**, we provide food to our neighbors in the city of Lynchburg, and the counties of Bedford, Amherst, Appomattox, Campbell and Nelson.



Southern Region



6.4 million
POUNDS DISTRIBUTED
(5.3 MILLION MEALS)



95
PARTNERS
(FOOD PANTRIES AND
PROGRAM SITES)



8,500
AVERAGE NUMBER
OF CHILDREN
SERVED EACH MONTH*



5,500
AVERAGE NUMBER
OF SENIORS
SERVED EACH MONTH*

*Through pantries and programs

The Need



28,200 people served
each month in
this area

Our Strategic Priorities and Programs

Eliminate Disparities in Access to Nutritious Food

- Partner Food Pantries, Soup Kitchens, and Shelters
- Mobile Food Pantry
- Neighborhood Produce Market
- Pop-Up Mobile Distributions
- Emergency Food Boxes
- Kids Café
- Summer Kid Packs

- Family Backpack Program & Community-Supported Backpack Programs
- Summer Food Service
- Good Food School Market
- Reach
- Senior Food Boxes (CSFP)
- Culturally Familiar Food

Improve Health of Guests

- Food Pharmacy
- Healthy Pantry Initiative
- Super Pantry
- Walk the Line

Support Household Financial Stability

- Public Benefits Outreach